



PARADISE DENTAL TECHNOLOGIES



Hygiene ♦ Perio ♦ Restorative ♦ Surgical ♦ Endo

PRODUCT CATALOG - EDITION 15.2

ABOUT PDT



It is important to me that we play a part in your success. Success can be defined in many ways: health, happiness, caring, as well as wealth.

We continually strive to bring you the best products to assist you to be a successful, caring dental professional, keeping you healthy through ergonomics and the best quality with blade and product designs to keep your patients happy, healthy, and comfortable. Let's continue to grow together and provide long term patient success. As we all know the oral cavity is the gateway to overall health.

Together we can make a difference in countless lives around the world. We feel very blessed to have your support and look forward to continuing to serve you in the future.

All my best,

Linda J. Miller
CEO/Founder, PDT, Inc.

WE CARE ABOUT PEOPLE

As you enter our manufacturing facility in Missoula, Montana, you will see a sign, "Beyond these doors the Finest Dental Instrument Craftspeople in the world apply their trade."

PDT has an incredible team committed to quality of product and service. We work together to put your health, your wants, your needs, and those of your customers and patients first. We are here for you. Thank you for your tremendous support and understanding of our concepts, which continues to keep us the fastest growing dental instrument company in the world!



COMFORT ♦ QUALITY ♦ DURABILITY



More brittle,
accentuated grain lines,
coarse molecules.



Tougher, Stronger, Holds
Edge Longer

- ♦ PDT Steel = Rockwell C59
- ♦ Sharper, thinner blades
- ♦ Highest quality 440A stainless steel
- ♦ Unique heat treat & cryogenic formula
- ♦ Uniform molecular grain structure
- ♦ Lasts 2-7 times longer



- ♦ Solid Resin Handle
- ♦ Comfortable Grip
- ♦ Ultra Light
- ♦ Superior Control
- ♦ Tactile Sensitivity
- ♦ Reduced Hand Strain



THE PDT DIFFERENCE

- ♦ All products are **handcrafted** by master craftspeople
- ♦ 100% made in USA and Germany
- ♦ **Ergonomic** handle designed alongside orthopedic surgeons, physical therapists, and dental professionals
- ♦ Extended knurling and handle shape provide a more comfortable grip with **less hand fatigue and pinch force**
- ♦ Wide, **10 mm diameter** handle design reduces muscle fatigue
- ♦ Solid, thermal resin handles allow instruments to weigh only **13 grams**
- ♦ **Lightest, most tactile sensitive** instruments on the market
- ♦ **Harder & stronger steel** due to our proprietary heat treatment and unique cryogenic processing
- ♦ Instruments retain their **sharpness longer** due to the hardness of the steel
- ♦ Instruments stand up to resharpening and last **2-7 times longer** than our competitors
- ♦ Bold, innovative instrument designs developed with **practicing clinicians** based on their professional and patient needs
- ♦ PDT **blade size, angulation, curvature**, and **balance** give you and your patients the best experience possible

NOT JUST PRETTY COLORS



Pre-Molar
Orca
Black



Diagnostic
**Pacific
Blue**



Universal
**Nautical
Blue**



Anterior
**Passionate
Purple**



Distal
**Caribbean
Green**



Implant
**Tangerine
Orange**



Mesial/
Posterior
**Sunshine
Yellow**



Restorative
Alabaster
Grey



Surgical
**Bermuda
Blue**



Endodontic Emerald Green

**ANATOMICALLY COLOR CODED
FOR FASTER RECOGNITION & SETUPS**

TABLE OF CONTENTS

[illegible]



GIVE BACK AND GO GREEN WITH PDT

PDT strives to be conscious of the environment and give back on a global level.

For every 12 instruments sent to us, regardless of the manufacturer, we will send you a NO CHARGE* PDT hygiene instrument of your choice. *some restrictions apply

Our craftspeople selectively choose, then recondition any salvageable instruments to donate to non-profit organizations and over 400 missions worldwide annually. Any instruments that cannot be restored will be recycled.

Visit pdttdental.com/earthcare to see how you can make a difference!



Michelle Strange, RDH cleans a patients teeth in Uganda with PDT's Montana Jack®.



Kathryn Anderson, RDH smiles with a young patient in Jamaica after her first dental cleaning.



RDHs Sharon and Louise display their Montana Jacks® in Honduras.

PDT missions around the world



"Providing the skills to improve oral health in my community and globally is dear to my heart. On my global mission trips, I do not always have access to power scalers. The hand instruments I use have to work hard to overcome the tenacious calculus I encounter. When PDT donated instruments for my trip, I was blown away: Not only by their generosity, but also that the instruments stood up against that tenacious calculus and kept an edge longer than I could have ever imagined.

I was always a PDT fan, but now, after their generosity and seeing what their instruments can really do for me as a clinician, I am a forever user. Thank you PDT for helping me care for people all over the world!"

-Michelle Strange, RDH

Visit pdttdental.com/missions to request PDT instruments for your mission.

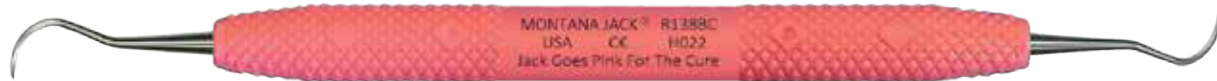
★ Montana Jack® R138



- ◆ The one and only Montana Jack® sickle scaler is ultra-light, thinner, tougher, harder, sharper, and still unmatched!
- ◆ Has the perfect contra-angle for the most optimal adaptation
- ◆ The very thin, sharp and durable blade provides convenient interproximal access
- ◆ Practicing clinicians report it accesses throughout the posterior region with less ergonomic stress and optimal patient comfort

THE #1 INSTRUMENT HYGIENISTS CANNOT LIVE WITHOUT!

★ Montana Jack® Pink R138BC



FOR EVERY MONTANA JACK® PINK PURCHASED, PDT WILL MAKE A DONATION TO THE CANCER RESEARCH INSTITUTE

★ Montana Jack® Rigid R138R



- ◆ All the great features of the Montana Jack®, with a thicker shank and blade to withstand more pressure, with less flexibility
- ◆ Great for tough debridement, cement removal, and interproximal carving

★ Montana Jack® B-Ti R138T



- ◆ The great features of the Montana Jack®, now available in Titanium for implant maintenance
- ◆ The perfect supplement to your R900 Wingrove™ Go-To Set
- ◆ Blades are uniquely processed, solid USA medical-grade titanium
- ◆ Does not scratch implants and can be sharpened on a dedicated stone
- ◆ Suggested for use on single implant posterior crowns
- ◆ Features a blunt tip as an additional protection when working with implants

★ Queen of Hearts™ R144



- ◆ Research has shown people with periodontal disease are twice as likely to suffer from cardiovascular/cerebrovascular disease
- ◆ The Queen of Hearts™ periodontal curette has 6 mm long, fine cutting edges for finishing with a completely smooth surface when root planing, bringing your patient one step closer to better overall health
- ◆ The blade has been balanced and rotated so the toe of the instrument can be inserted into a deep narrow pocket, minimizing tissue trauma and allowing comfortable universal access

FOR EVERY QUEEN OF HEARTS™ PURCHASED, PDT WILL MAKE A DONATION TO THE AMERICAN HEART ASSOCIATION

★ Jack B. Nimble® R130



- ◆ The Jack B. Nimble® is a small, contra-angled scaler with a continuous curved blade
- ◆ The blade is structured so the increased surface of the cutting edge comes in direct contact with the tooth surface when scaling
- ◆ Allows practitioners to apply positive lateral pressure when working in anterior/premolar regions
- ◆ The ultimate instrument for crowded, rotated, or lingual-version teeth
- ◆ Great for cement removal



★ Jack B. Nimble® Slim R130S



- ◆ All the great features of the Jack B. Nimble® with a slimmer blade
- ◆ Optimal for accessing crowded anterior teeth or working around orthodontia



★ H5-L5 R090



- ◆ PDT's H5-L5 has achieved one of the highest acceptance ratings by a leading evaluation group
- ◆ A 2-in-1 anterior instrument with an H5 straight sickle scaler on one end for deposit removal and interproximal access, and a Langer 5 on the opposing end for fine finishing
- ◆ The Langer 5 is shaped similar to an anterior Gracey but it is a double-sided universal curette used to increase efficiency and overall instrument application

★ H5-L5 Mini R092



- ◆ A 2-in-1 anterior instrument with an H5 straight sickle scaler on one end for deposit removal and interproximal access
- ◆ The opposing end features Langer 5 Mini for increased subgingival adaptation for narrow anterior anatomy

★ MT 4-5 R120



- ◆ Big brother to the 204S - similar adaptation and angle with a longer terminal shank and blade
- ◆ Rigid extended reach, yet thin enough for enhanced interproximal access

★ Nebraska 128-L5 Mini R093



- ◆ A 2-in-1 anterior instrument featuring both a scaler and a fine finishing Langer 5 mini curette
- ◆ Long Nebraska 128 sickle on one end is great for overlapped teeth and tight interproximal areas
- ◆ Langer 5 Mini is great for deep, narrow pockets

★ Mini Me R089



- ◆ A full anterior universal Langer 5 on one end and an anterior universal Langer 5 mini on the opposing end

★ Root Elevator Seldin 301 T102



- ◆ PDT's ergonomically advanced root elevator with specially designed handle that provides a firm, comfortable grip
- ◆ Available in a full range of tips including Cryer and Lindo-Levien (See page 34 for PDT's complete root elevator line)

★ Scalpel Handle, Adjustable in 7 Positions T705



- ◆ Adjusts to 7 different angles for better access in hard to reach areas
- ◆ Special grip designed for advanced ergonomic support and optimal precision
- ◆ Easily disassembles for convenient cleaning and sterilization

★ MT Explorer R170



- ◆ Same contra-angle as the Montana Jack®
- ◆ Durable spring tip provides convenient interproximal access
- ◆ Excellent for caries and calculus detection

MIRROR HANDLE

★ Cone Socket Mirror Handle R245



- ◆ Fits any standard cone socket screw-in mirror heads, also available to fit simple stem mirrors (R248)
- ◆ Features PDT's light weight, solid resin handle with mobility probe

ACE™ FURCATION PROBES

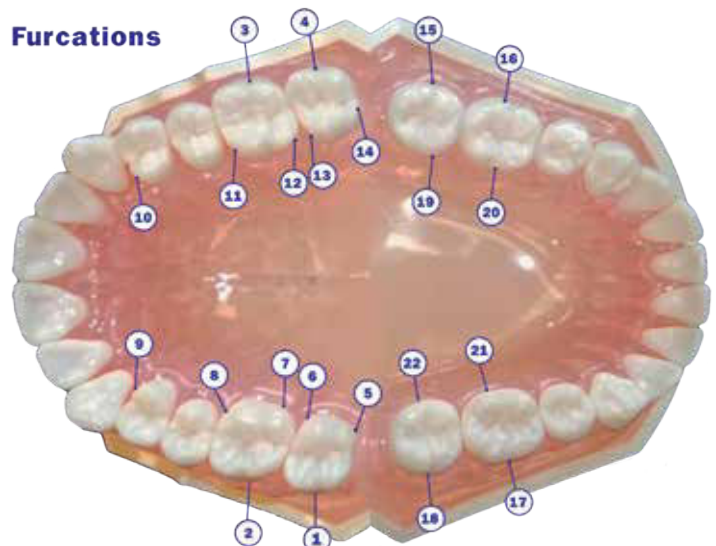
★ WRS ACE™ - UNC12 R215
(1-2-3-4-5-6-7-8-9-10-11-12)

WRS ACE™ Probe UNC 12 has markings from 1-12 mm on the straight probe end

★ ACE™ - 12 SHORT R216
(3-6-9-12)

ACE™ Probe 12 Short has 3-6-9-12 mm markings on both ends

- ◆ One instrument for all your probing; straight probe on one end, furcation probe on the other; save time and instruments
- ◆ The ACE™ Furcation Probes feature a thinner furcation probe design for greater patient comfort
- ◆ Flexible enough to reach the most difficult furcations
- ◆ The furcation end is etched with 3-6-9-12 markings
- ◆ When doing a crown lengthening procedure the ACE™ Furcation Probe UNC12 allows for a definitive measurement of depth
- ◆ Both instruments can be used for pocket probing as well as probing the furcation



*Comprehensive furcation exam using the ACE™ probe.
Insert probe into the furcation locations as shown on the above graphic.

PINEYRO ARCH™ KIT



See pages 18-19 for information on the Pineyro Arch Kit, for the treatment of patients with full-fixed hybrid implants

ENDODONTIC



See page 50 for a full list of endodontic instruments

O'HEHIR NEW MILLENNIUM™ CURETTES



Trisha E. O'Hehir, RDH, BS



- ◆ Unique scoop blades that cut a 270° perimeter
- ◆ Push, pull in any direction
- ◆ Three dimensional scaling and root planing
- ◆ Allows clinician to reach areas missed by traditional curette blades
- ◆ Perfect for flutings, furcations and line angles
- ◆ Designed for access and effectiveness
- ◆ No tissue trauma



Our unique approach to design and durable, 100% USA-made materials and manufacturing capabilities has enabled us to significantly improve the traditional Gracey design in a way you can easily see and experience for yourself. PDT's Amazing Graceys™ are designed for easier adaptation to the tooth surface with more efficient contact! The practitioner uses fewer strokes resulting in less stress on both the patient and the professional, reducing patient chair-time.

PDT AMAZING GRACEY™ with a continuous curve

- ◆ Entire blade hugs the tooth
- ◆ More efficient tooth contact
- ◆ Requires fewer strokes
- ◆ Increased comfort for patient and practitioner



LEADING COMPETITOR with a traditional straight blade

- ◆ Must rotate the blade
- ◆ Only 1/3 of blade makes contact
- ◆ Straight blade distends tissue
- ◆ Requires more strokes

- ◆ Highest quality 440A stainless steel
- ◆ Unique heat treat and cryogenic formula

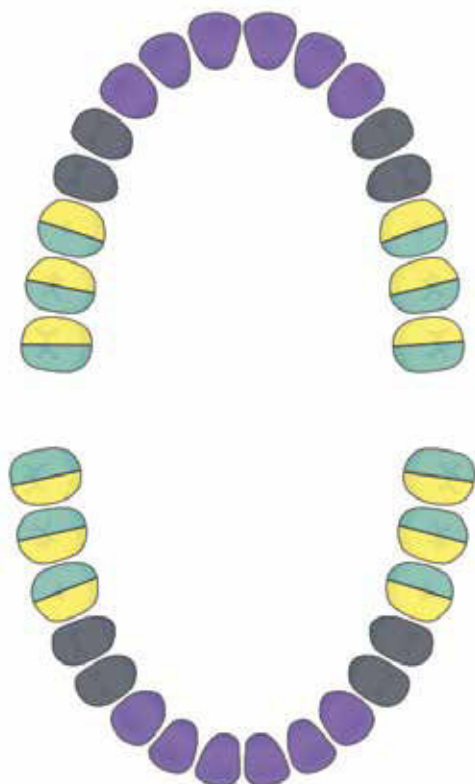
- ◆ Ultra light, solid resin handle
- ◆ Ultimate tactile sensitivity

- ◆ Color-coded for faster recognition and set-ups!



- ◆ Sharper, harder, tougher blades
- ◆ Holds edge longer, needs less sharpening
- ◆ Longer instrument life
- ◆ Continuous curve of blade adapts to tooth

- ◆ Comfortable large diameter handle
- ◆ Exclusive extended knurling
- ◆ Superior control and torque
- ◆ No torque on your hand since blade immediately adapts to tooth



ANTERIOR



PRE-MOLAR



MESIAL



DISTAL

ANATOMICALLY COLOR CODED FOR FASTER RECOGNITION & SETUPS



Gracey 00 R001



Gracey 5-6 R020



★ Gracey 13-14 R028



★ Gracey 1-2 R016



★ Gracey 7-8 R022



Gracey 15-16 R030



Gracey 3-4 R018



Gracey 9-10 R024



Gracey 17-18 R032



★ Gracey 11-12 R026

QUADRANT - SPECIFIC GRACEYS



Gracey 11-14 R034



Gracey 12-13 R036

These quadrant - specific Gracey designs help with efficiency by reducing the number of times instruments need to be picked up and put down.

TITANIUM IMPLANT MAINTENANCE SPECIFIC GRACEYS



Gracey 1-2 Micro-Mini Ti R694



Gracey 11-12 Micro-Mini Ti R695



Gracey 13-14 Micro-Mini Ti R696

GRACEY DEFINITIONS

R =Rigid	Large diameter shank makes the instrument stiffer, less flex, standard blade
ERM =Extended Reach Mini	Terminal shank is 5mm longer, mini blade is half the length of standard blade
ERMR =Extended Reach Mini Rigid	Larger, stiffer, terminal shank is 5mm longer, mini blade is half the length of standard gracey
ER =Extended Reach	Terminal shank is 5mm longer; Amazing Gracey blade is 3.5 - 4mm
ERR =Extended Reach Rigid	Larger diameter terminal shank is 5mm longer; instrument is stiffer with less flex
ERMM =Extended Reach Micro Mini	20% thinner blades and 1/2 the blade length with an extended terminal shank
ERMM Ti =Extended Reach Micro Mini Titanium	20% thinner blades and 1/2 the blade length with an extended terminal shank in Titanium

INSTRUMENT	ITEM #	R	ERM	ERMR	ER	ERR	ERMM	ERMM Ti
Gracey 00	R001	R001R						
Gracey 1-2 ★	R016	R016R	R010				R011	R694
Gracey 3-4	R018							
Gracey 5-6	R020	R020R	R003					
Gracey 7-8 ★	R022	R022R	R004	R004R			R012	
Gracey 9-10	R024		R005	R005R				
Gracey 11-12 ★	R026	R026R	R006	R006R	R042	R042R	R013	R695
Gracey 13-14 ★	R028	R028R	R007	R007R	R043	R043R	R014	R696
Gracey 15-16	R030	R030R	R008	R008R	R044			
Gracey 17-18	R032	R032R	R009					
Gracey 11-14 Quadrant Specific	R034	R034R			R046			
Gracey 12-13 Quadrant Specific	R036	R036R			R047			

UNIVERSAL CURETTES



Barnhart 1-2 R060



Barnhart 1-2 Rigid R060R



★ **Barnhart 5-6 R061**



★ **Columbia 13-14 R064**



Columbia 2L-2R R066



★ **Columbia 4L-4R R067**



McCalls 13-14 R069



McCalls 13S-14S R070



McCalls 17-18 R071



McCalls 17S-18S R072



Rules 3-4 R076



Younger-Good 7-8 R077



Langer 1-2 R079
Also available in Mini R082



Langer 3-4 R080
Also available in Mini R083



Langer 5-6 R081
Also available in Mini R084



Langer 17-18 R087
Also available in Mini R088



Mini Me™ R089



23A R099



★ **Queen of Hearts R144**
See page 5 for more information

What clinicians are saying...

"This is the sharpest curette I have ever used. The tip is outstanding for removal of granulation tissue and calculus in molar furcations."

-Dr. Robert Horowitz, Periodontist NYU College of Dentistry;
Private Practice, Scarsdale, NY



**FOR EVERY QUEEN OF HEARTS™ PURCHASED,
PDT WILL MAKE A DONATION TO THE AMERICAN HEART ASSOCIATION**

★ Most Popular Items

ANTERIOR SCALERS



★ **H5-L5** R090



N1 R096



NEB 128-33 R115



NEB 128-L5 R091



★ **H6-7** R110



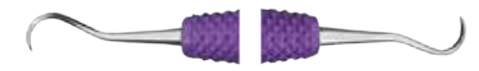
SE NEB 128 R116



★ **H5-L5 Mini** R092



H5-33 R111



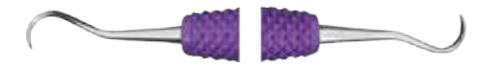
★ **Jack B. Nimble®** R130



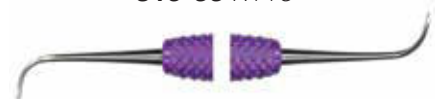
★ **N128-L5 Mini** R093



U15-33 R113



★ **Jack B. Nimble® Slim** R130S



NEB 128 R114

POSTERIOR SCALERS



★ **MT 4-5™** R120



Micro Sickle R134



★ **Montana Jack®** R138



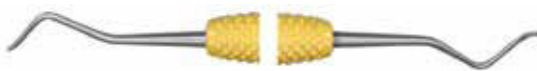
J 34-35 R125



★ **204S** R135



★ **Montana Jack® Rigid** R138R



Cattoni 107-108 R129



204SD R136



N2 R139



204 IUFW R133



★ **Montana Jack®** R138BC



220 R142



23 (Pointed Toe) R098



★ **23 (Pointed Toe) Slim** R098S

MACFARLANE LINE



MF0-1 R121



***MF6-7** R148



MF2-3 R122



***MF8-9** R149

*Excellent for carving composite & carefully scaling tenacious calculus with Tungsten Carbide blade.



Ultimate Edge™ Sharpening Kit with Diamond Head Ceramic Stone T066 ★



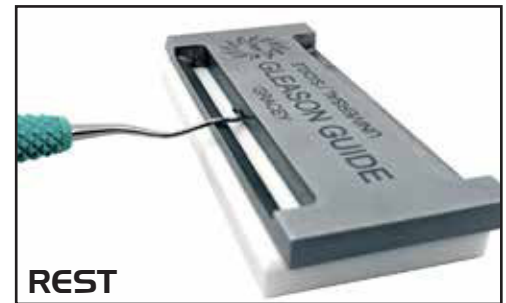
Ultimate Edge™ Transformation Kit T067



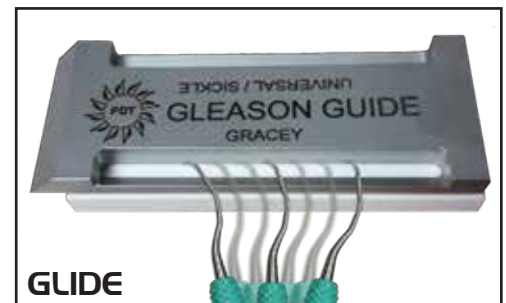
Ultimate Edge™ Kit with Transformation Stone T068



1. Place instrument in stop position



2. Bring terminal shank to rest position



3. Glide blade side to side to sharpen



To shape the toe, keep the instrument face parallel with the beveled edge then pivot the heel in an arc against the stone.

THE FASTEST, EASIEST, AND MOST ACCURATE WAY TO SHARPEN YOUR INSTRUMENTS!



Roger Gleason

A TIP FROM ROGER GLEASON

You will find the PDT GLEASON GUIDE easy to use and provides excellent results. Mark the edge of the instrument being sharpened with a "Sharpie". In doing so, you can monitor your progress by observing where the mark of the "Sharpie" wears off during the sharpening process. **Stay Sharp My Friends**



Need Help Sharpening?

Learn from PDT CEO Linda Miller



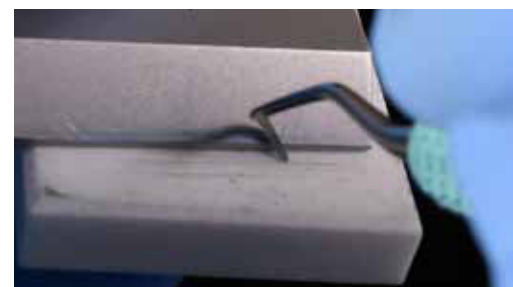
Visit pdt dental.com/sharpening for sharpening instructional videos!



Sharpen your
Montana Jack®



Use a PingRing™ to
test your edge



Shape the toe
of any curette

WINGROVE™ TITANIUM IMPLANT INSTRUMENTS

BLADES ARE SOLID USA MEDICAL-GRADE TITANIUM



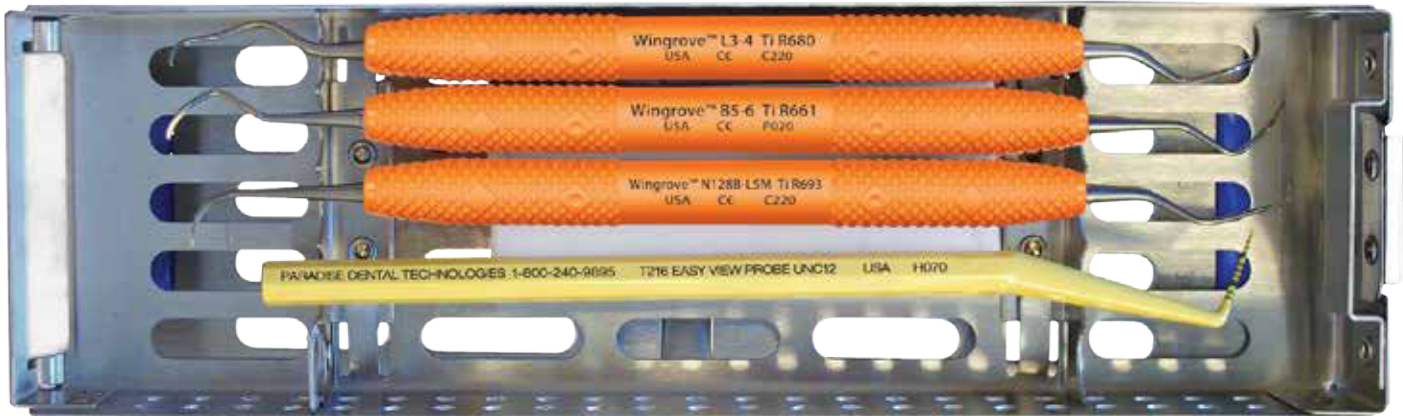
Susan Wingrove, RDH

Get all three specially designed instruments:

- ◆ Wingrove™ B5-6 Ti R661 ★
- ◆ Wingrove™ L3-4 Ti R680 ★
- ◆ Wingrove™ N128B-L5mini Ti R693 ★

PLUS a

- ◆ T216 EasyView™ probe ★
- ◆ T005A-F FlipTop™ cassette ★
- ◆ A dedicated Diamond Head Ceramic Stone™ in your R900 “Go-To” set.



The Wingrove™ Go-To Set features the best instrument selection to efficiently adapt to any implant patient's needs. Narrow-based Bulbous Crowns ◆ Wide-based Crowns ◆ Locator Abutments ◆ Hader Bars ◆ Exposed Threads ◆ Cement Removal

What clinicians are saying...

“I am more confident with cleaning hard-to-access implants, with reduced concern about scratching implants.”

-Susan Sander, RDH

“These scalers have improved my ergonomics because of the handle width, (light) weight, sharpness of scaler, and because of the shape of the blade.”

-Terrie Moncourtois, RDH

“(I can provide) the best implant care now that I can easily access the site with a sharp instrument that is comfortable and light to use.”

-Brenda Buergi, RDH

SHARPENING TITANIUM

PDT's uniquely processed solid titanium blades can be sharpened!

Must use a dedicated stone, T061 Diamond Head Ceramic Stone™ is included with R900 Wingrove set or sold separately (see page 15).



1. Place instrument in stop position



2. Bring terminal shank to rest position

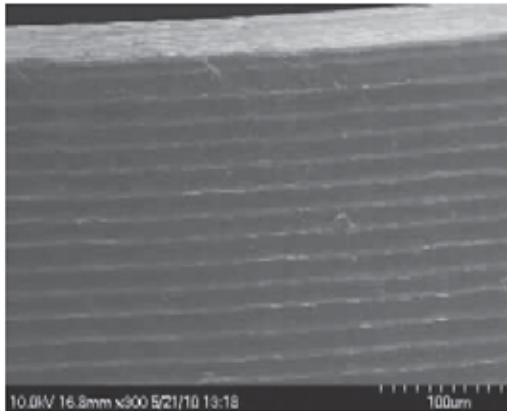


3. Glide blade side to side

Make sharpening consistent and easier using the Gleason Guide!

PDT's uniquely processed solid titanium does not scratch implants!

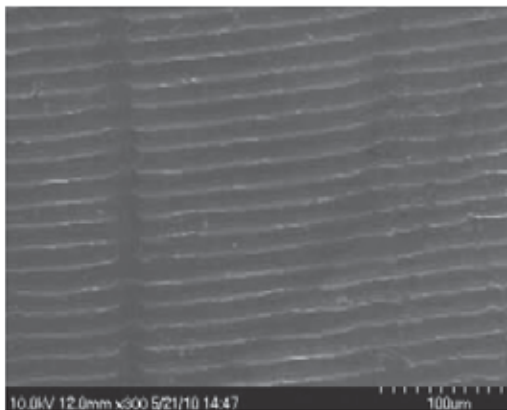
Microscopic view of an implant before and after a competitor plastic implant scaler, a competitor Ti implant scaler and using a PDT Ti Wingrove™ Scaler. Photos courtesy of Dr. J. Driver UM Division of Biological Sciences 2010.



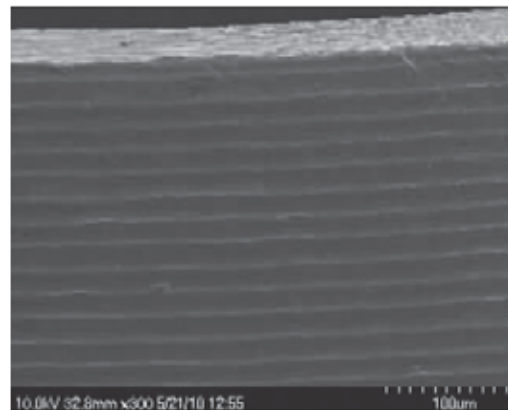
Sybron implant control photo



Debris left from plastic scaler



Competitor hardened Ti Scaler



No effect after PDT Ti scaler

MONTANA JACK® B-Ti



★ Montana Jack® B-Ti R138T

- ◆ The great features of the Montana Jack®, now available in Titanium for implant maintenance
- ◆ The perfect supplement to your R900 Wingrove™ Go-To Set
- ◆ Suggested for use on single implant posterior crowns
- ◆ Features a blunt tip as an additional protection when working with implants

TITANIUM AMAZING GRACEY™ MICRO MINIS



Gracey 1-2 Micro-Mini Ti R694



Gracey 11-12 Micro-Mini Ti R695



Gracey 13-14 Micro-Mini Ti R696

- ◆ Micro Mini blades are 20% thinner and 1/2 the blade length of the Gracey Mini with an extended terminal shank
- ◆ Thin blades are strong enough to remove calculus and cement around implants

The first instruments designed specifically to adapt to the shape of implant components



Pineyro Arch™ Kit R930

Includes 4 titanium instruments in a T005A-F FlipTop™ Cassette



Designing hygiene instruments that follow the circular anatomy of dental implants provides greater efficiency, ease of use, and predictability.

Patients benefit from shorter appointments, less gingival trauma, and the need for removal of fixed restorations can be eliminated.

Visit pdt dental.com/pineyro for more information, including instructional videos and an implant maintenance protocol written by Dr. Pineyro.



Alfonso Piñeyro, DDS

Dr. Piñeyro received his dental degree from the Universidad Autonoma de Guadalajara. He then completed a two-year advanced education in general dentistry before completing his specialist training in prosthodontics at the University of Rochester Eastman Dental Center. Dr. Piñeyro is currently an affiliate instructor at the Department of Restorative Dentistry at the University of Washington. He is the past president of the esteemed Washington State Society of Prosthodontists and is also a member of the American College of Prosthodontists and the American Prosthodontics Society.

Dr. Piñeyro has authored several publications in peer reviewed dental journals, chapters in textbooks and is currently involved in research focusing on dental implants. Dr. Piñeyro practices full time in a practice limited to fixed, removable and implant prosthodontics.



Pineyro Arch Ti 1

Anterior Arch - to debride the anterior placed implants for a Full-Fixed Hybrid, especially lingual area of lower anterior teeth, where calculus builds up most frequently



Pineyro Arch Ti 2

Posterior Arch - to debride the posterior placed implants for a Full-Fixed Hybrid, the design of the shank allows for proper access



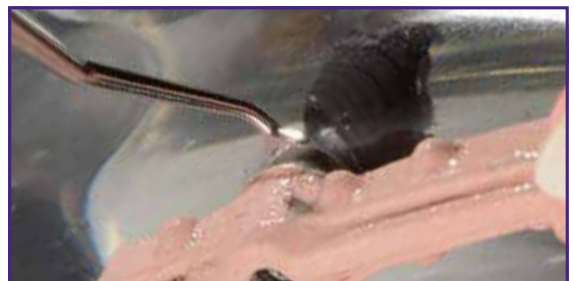
Pineyro Arch Ti 3

Mesial/ Distal Arch - to debride the posterior hard to reach mesial/ distal areas on the implants for a Full-Fixed Hybrid



Pineyro Arch Ti 4

Specialty Arch - or all implants prior to taking impressions
-clean off abutments for single to hybrid cases prior to cementation



RESTORATIVE Discoid-Cleoids



3/6 DC R269



★ 4/5 DC R270



89/92 DC R271

Carvers



Interproximal Carver Off Angle (IPC OA) R282



Interproximal Carver (IPC) R283



★ Hollenback 1/2 3 R284



Hollenback 3 R285



Ward 1 R292



Ward 2 R293

Burnishers



Burnisher 18 R329



Burnisher 2/29 R330



★ Hollenback 6 R331



Burnisher 26/27S R332



Burnisher 27/29 R333



Ladmore 3 R334



★ Acorn 21B R335



★ Calcium Hydroxide Placement R336



Norton C/P R337

Pluggers



Blacks Plugger 0/1 R347
Also available in Serrated R347S



Blacks Plugger 1/2 R348
Also available in Serrated R348S



Backaction Plugger 11/12 R349
Also available in Serrated R349S

Cord Packers



113S Off Angle Serrated Cord Packer R362S
Also available 113 Off Angle Cord Packer R362



113 Straight Cord Packer R363



113S Straight Serrated Cord Packer R363S

Mixing



Spatula/Applicator R375

Excavators



38-39 Excavator R386



63/64 Excavator (15-8-12) R395

RESTORATIVE

Margin Trimmers



28 Margin Trimmer (10-95-7-14) R403



29 Margin Trimmer (10-80-7-14) R405

Chisels



11/12 Biangle Chisel (15-8-8) R419



19 Bi-Bevel Hoe (3-2-28) R420

Hatchets



8-9 Hatchet (10-7-14) R416



51/52 Hatchet (15-8-12) R421

Composite Instruments



Gregg 4-5 R294



G2 Thin R286



G3 Thin R287



G4 Thin Mini R288



★ CSS-2 R514



CSS-5 R526



★ IPC-T R534



★ CSS-3 R518



CSS-6 R530



★ IPC-L R538



CSS-4 R522

The gold standard for composite sculpting instruments. Material won't stick and is easy to manipulate due to the titanium nitride coating.



8A R542



★ DrV™ 1-2 R560



An all-encompassing set of highly-polished composite instruments, including various placement and occlusal forming instruments.



DrV™ 5-6 R562



★ DrV™ 3-4 R561



DrV™ 7-8 R563



Tofflemire Matrix Band Retainer T787

DIAGNOSTIC

- ◆ Durable, thin spring steel tips
- ◆ Convenient interproximal access
- ◆ Solid ultralight resin handle
- ◆ Ultimate tactile sensitivity
- ◆ Tensile strength and flexibility
- ◆ Caries, calculus, and tooth irregularity detection



★ MONTANA EXPLORER R170



★ Explorer 5 R166



Probe WHO (PSR) R197
(.5-3.5-5.5-8.5-11.5mm)



WRS ACETM - UNC 15 R214



★ Explorer 11-12 R167



Probe UNC 15 R198
(1-2-3-4-5-6-7-8-9-10-11-12-13-14-15mm)



WRS ACETM - UNC 12 R215
(left: 3-6-9-12mm) (right: 1-2-3-4-5-6-7-8-9-10-11-12mm)



Explorer 2 R168



Probe UNC 12 R199
(1-2-3-4-5-6-7-8-9-10-11-12mm)



★ ACETM 12 Short R216
(left: 3-6-9-12mm) (right: 3-6-9-12mm)



Explorer 11-12 ER R169



Probe WHO - UNC 15 R200



★ Explorer 23/PROBE 12S R222



TUFTS 17-23 R171



Probe UNC 15 - CPITN R201



★ Explorer 23/PROBE 12 R223



★ Explorer 23 R183



Probe Nabers 2 R205
(3-6-9-12mm)



Explorer 23/PROBE OW R224



Probe 11 R194
(3-6-8-11mm)



OW Goldman - Fox R206
(1-2-3-5-7-8-9-10mm)



Explorer 23/PROBE WHO R225



★ Probe 12 R195
(3-6-9-12mm)



Probe Baylor 1-2 R207
(3-6-9-12mm)



Explorer 23/UNC 15 R226



Probe OW R196
(1-2-3-5-7-8-9-10mm)



PR UNC 12 - WHO R210



Explorer 23/UNC 12 R227